



1. REMOVE THE FOAMER



Turn off the coffee machine with the button on the side.



- PULLING IT TO YOURSELF





2. Pull off the plastic cover from the bottom.



- simply by prying it up...

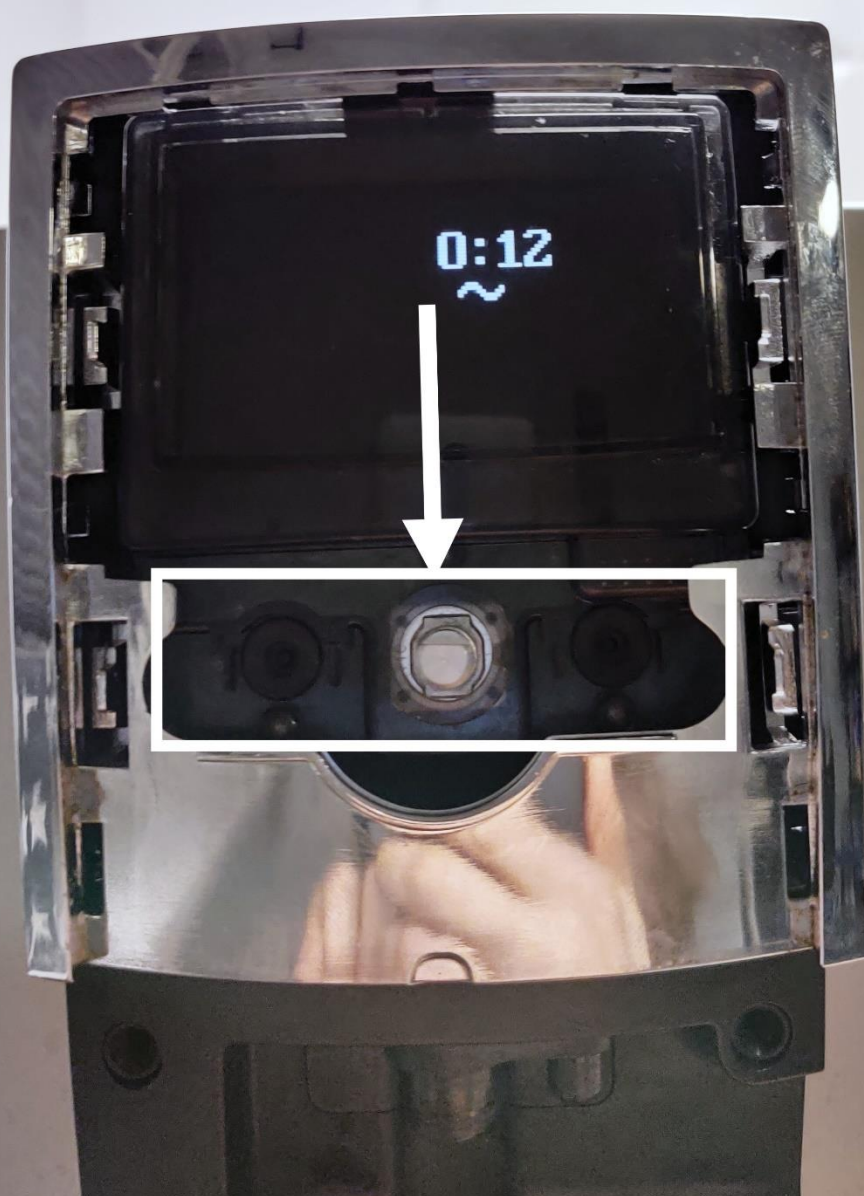
3.



... and do not move the plastic frame.

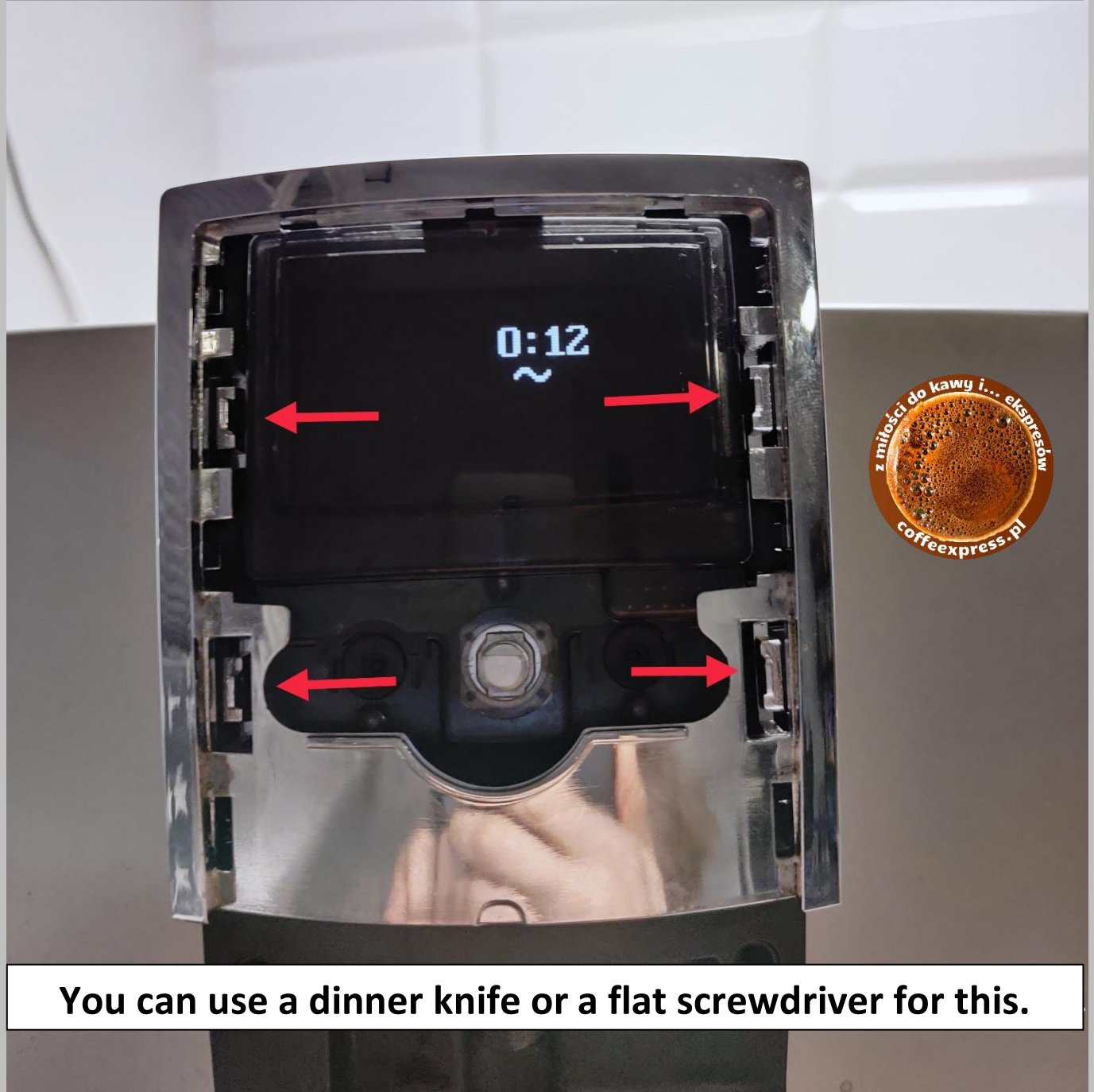


5. Pull out the buttons.



6. Pull off the chrome frame.

You have to gently pry it at these four points.
Opposite the direction of the red arrows!

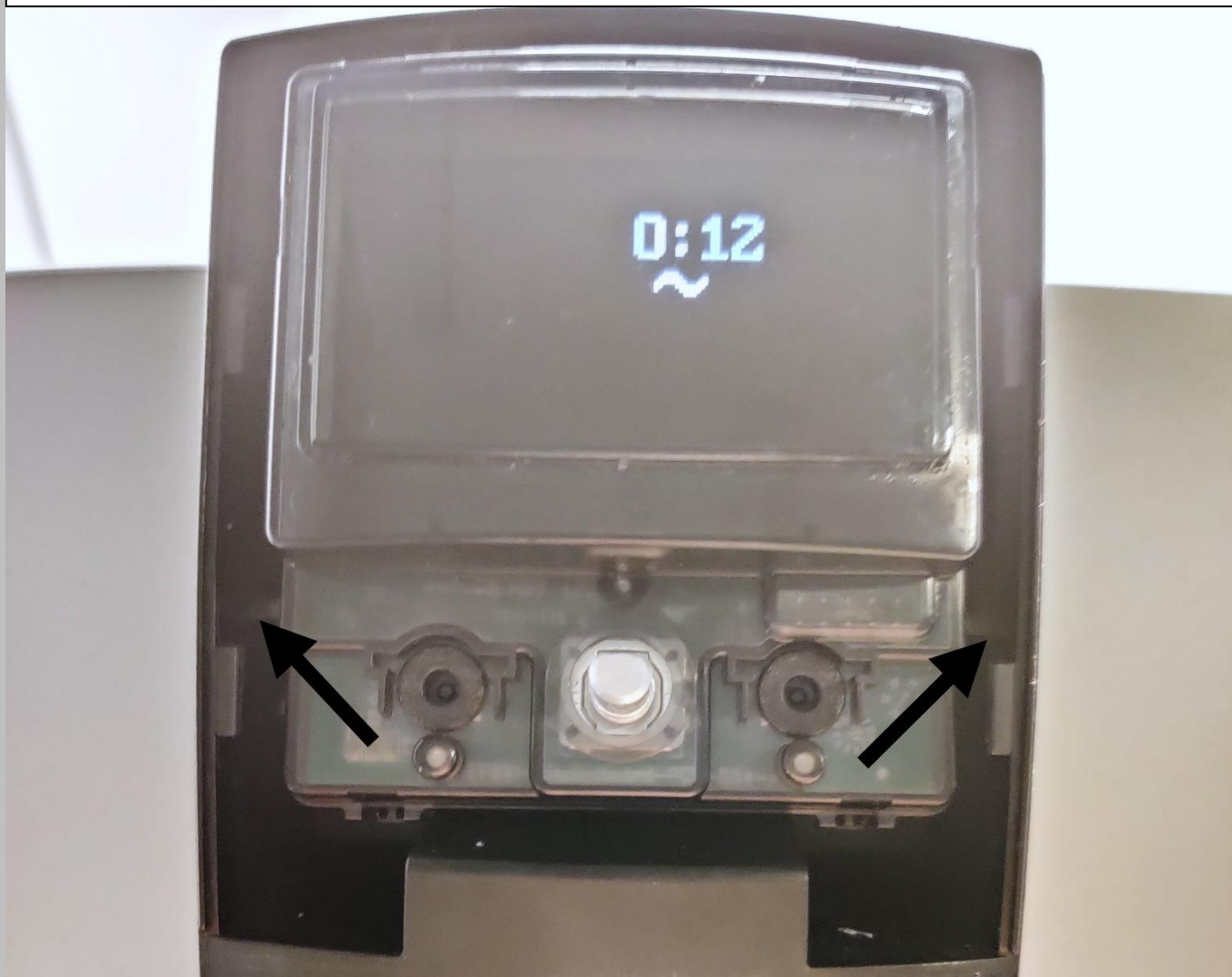


You can use a dinner knife or a flat screwdriver for this.

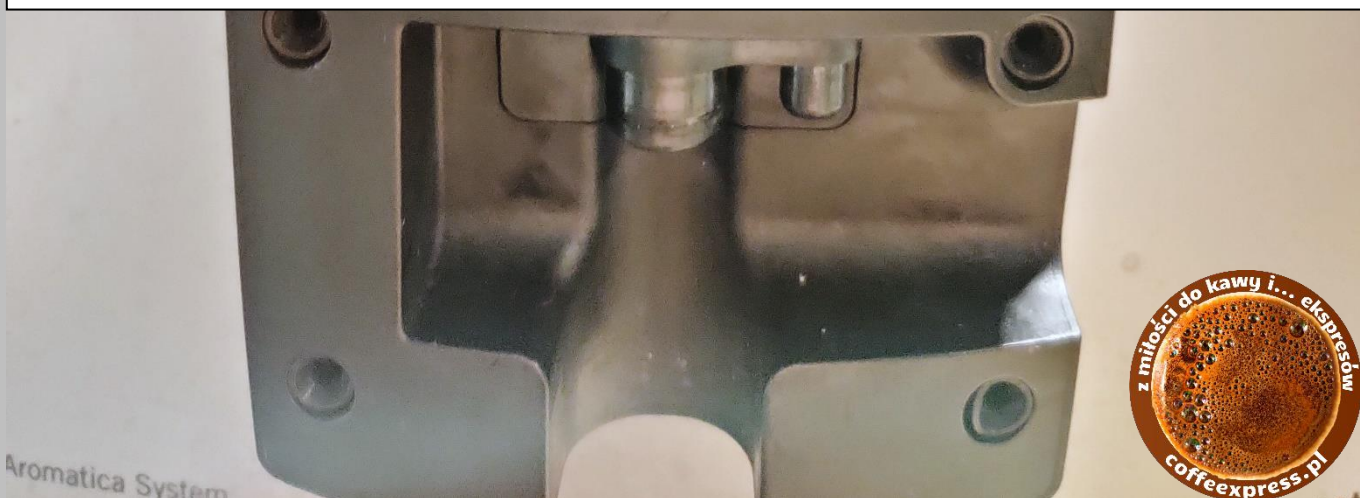
7.

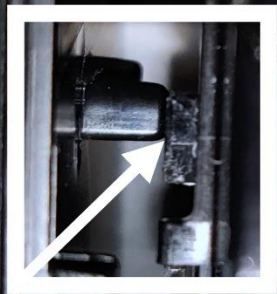


8. The last step: pull out the display module.



You have to pry it - in these two points.





10. Pull down the screen from the bottom. It's almost ready...



CafeRomantica



11. All you need to do is disconnect the cables from the back.



Done! The screen module is removed.

11. Information about shipping

Please send the disassembled module to the following adress:



coffeexpress.pl

Pekowicka 37/2

31-262 Kraków

POLAND

kontakt@coffeexpress.pl

tel. +48 792 175 692

In case of any problems, we are here to help
Regards